

AENC-ARC-ENV-REP-0063

Norwich to Tilbury

Volume 6: Environmental Statement

Document: 6.13.F7 Errata Environmental Statement Figure 13.7 -
Visual Receptors and Viewpoints Tracked Changes Version of
Deadline 4 Submission

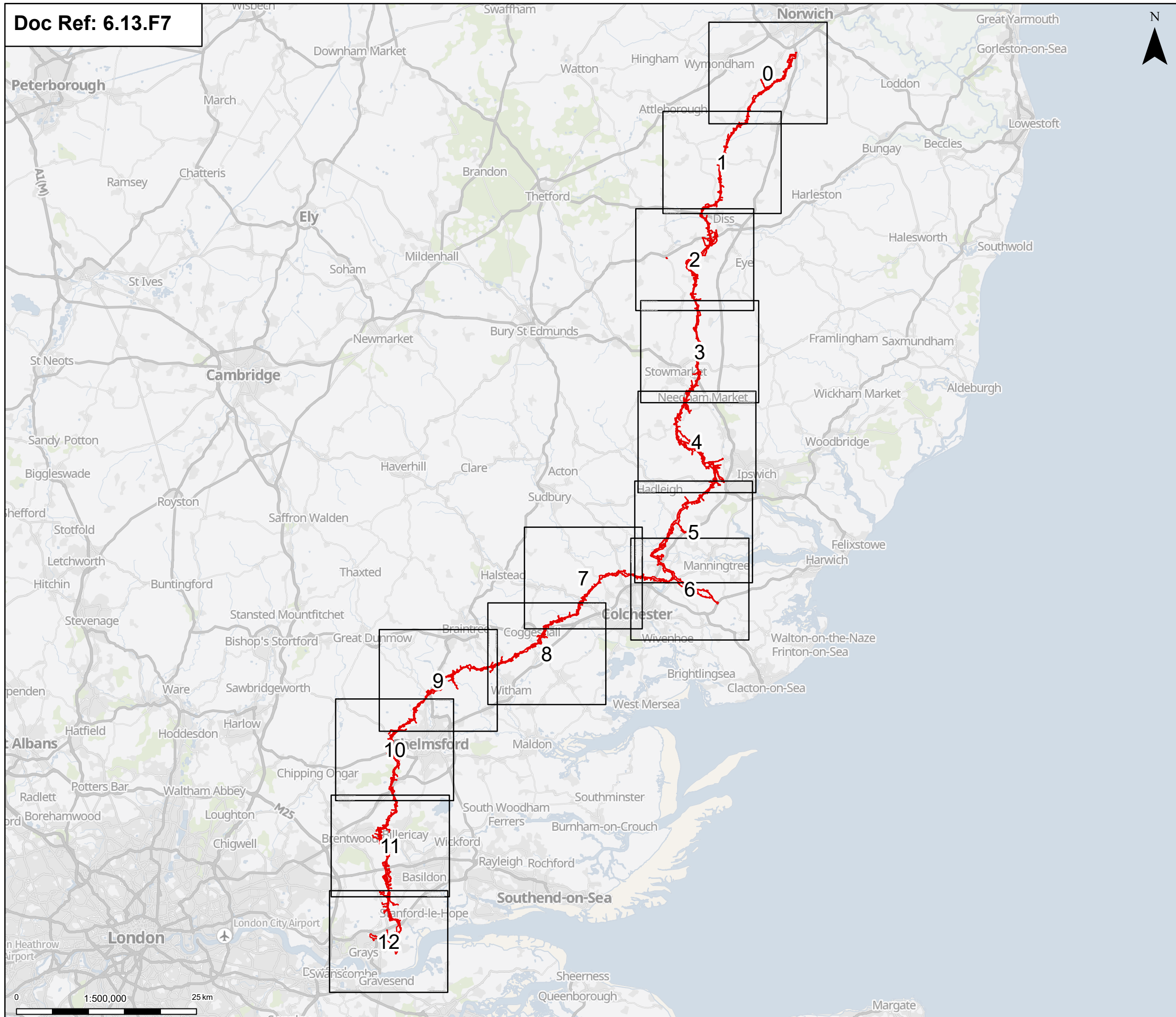
Final Issue C

June 2026

Planning Inspectorate Reference: EN020027

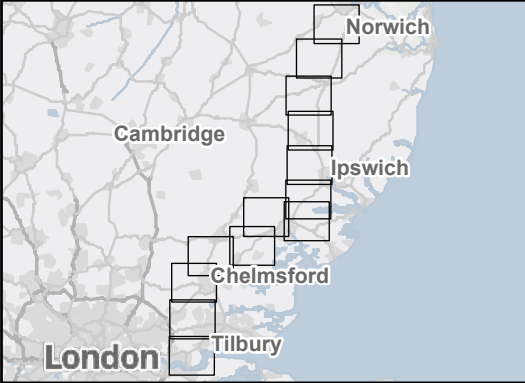
Infrastructure Planning (Applications: Prescribed Forms and Procedure)
Regulations 2009 Regulation 5(2)(a)

nationalgrid



Order limits
Page

Notes: © Crown copyright and database rights 2025 Ordnance Survey AC0000808122, Contains public sector information licensed under the Open Government Licence v3.0, © National Grid UK



Rev	Date	Description	Drawn	Check	Approv
C	May 2026	FOR DCO APPLICATION	SS	AF	KB
B	Dec 2025	FOR DCO APPLICATION	KF	AF	KB
A	Aug 2025	FOR DCO APPLICATION	SS	AF	KB

PROJECT:
nationalgrid Norwich to Tilbury

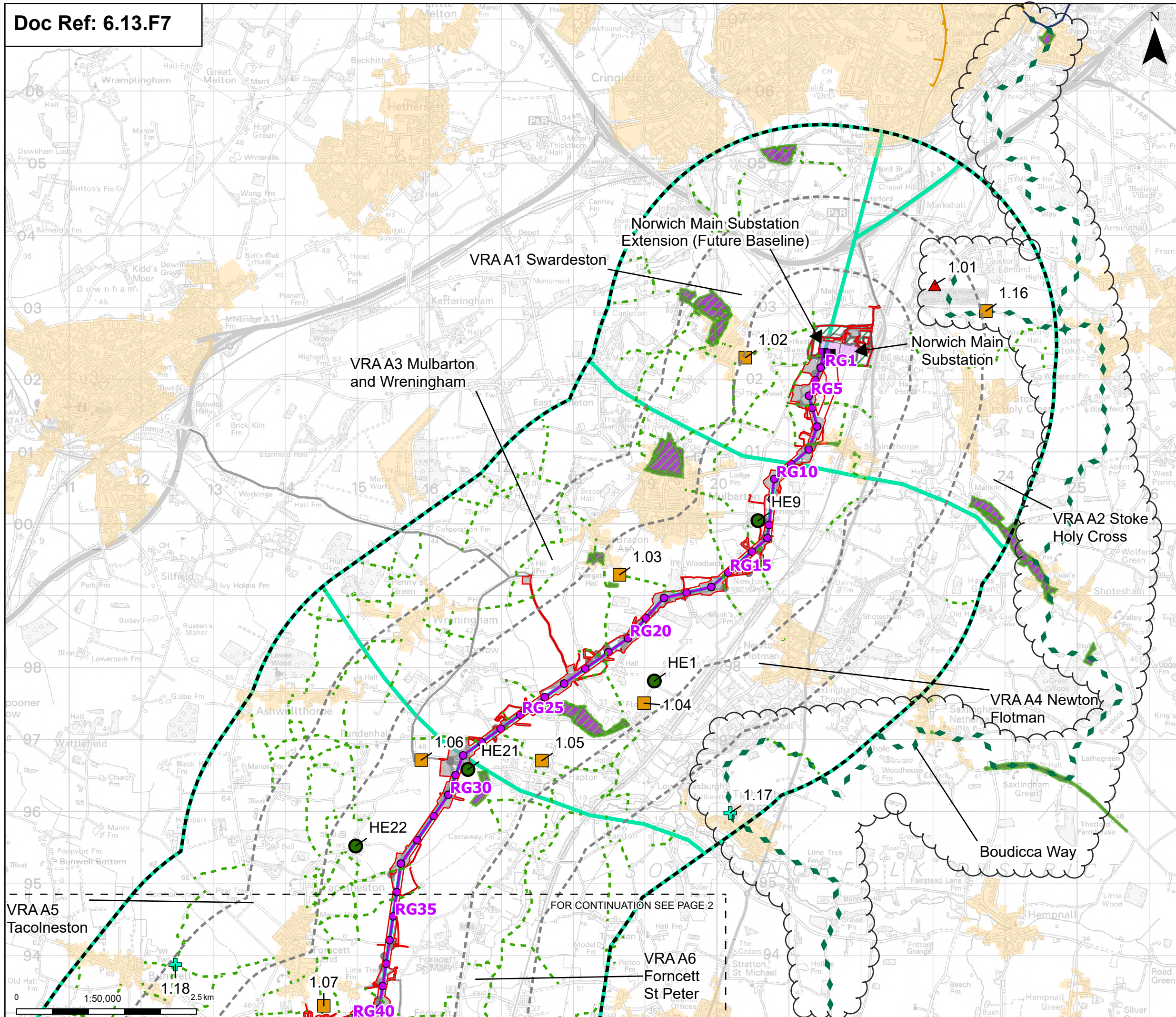
Planning Inspectorate App Number: EN020027
Regulation 5(2)(a)

Title:
Figure 13.7 - Landscape and Visual - Visual Receptors and Viewpoints Overview

Designed	L. Cargill	Date	May 26
Drawn	S. Sarkar	Date	May 26
Checked	A. Fell	Date	May 26
Approved	K. Burrows	Date	May 26
Scale:	1:500,000	Datum:	AOD
Original Size:	A3	Grid:	OS
Suitability Code:	A2	Project Number:	10059280

Suitability Description:
Accepted as Concept Stage

Drawing Number:	10059280-ARC-ELS-ZZ-DR-ZZ-00300	Revision:	C
-----------------	---------------------------------	-----------	---



Order limits
 Sheet index cutline

Proposed project design details

- Proposed full line tension gantry
- Proposed standard lattice pylon location
- Proposed overhead line alignment
- Norwich Main Substation
- Norwich Main Substation Extension (future baseline)
- Environmental area
- Environmental mitigation
- Other temporary and permanent construction and operational works

Discipline specific constraints

- 1 km buffer
- 2 km buffer
- LVIA Study Area

Viewpoints

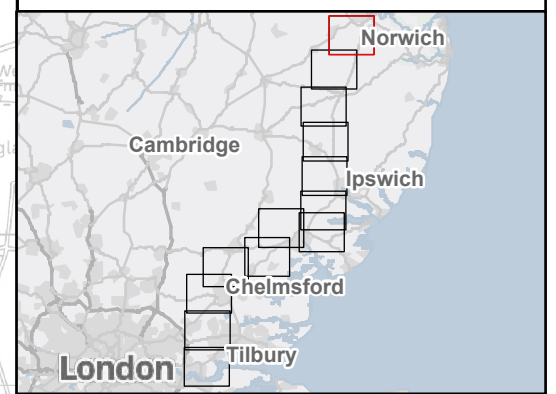
- ES landscape and visual viewpoint (baseline photo only)
- ES landscape and visual viewpoint (photomontage)

ES landscape and visual viewpoint (wirelines only)

- Additional historic environment viewpoints
- Public rights of way within 3 km Study Area
- Long distance path
- National cycle networks
- Traffic free national cycle networks
- On road national cycle networks
- Visual Receptor Area
- Countryside and rights of way (CRoW) conclusive registered common land
- Open access land

Note: The proposed overhead line alignment and proposed underground cable alignment together comprise the alignment. For further details regarding the design, please refer to Figures 4.1 (document reference 6.4.F1) and 4.2 (document reference 6.4.F2).

Notes: © Crown copyright and database rights 2025 Ordnance Survey AC0000808122, Contains public sector information licensed under the Open Government Licence v3.0, © National Grid UK



Rev	Date	Description	Drawn	Check	Approv
C	May 2026	FOR DCO APPLICATION	SS	AF	KB
B	Dec 2025	FOR DCO APPLICATION	KF	AF	KB
A	Aug 2025	FOR DCO APPLICATION	SS	AF	KB

PROJECT:
 nationalgrid Norwich to Tilbury

Planning Inspectorate App Number: EN020027
 Regulation 5(2)(a)

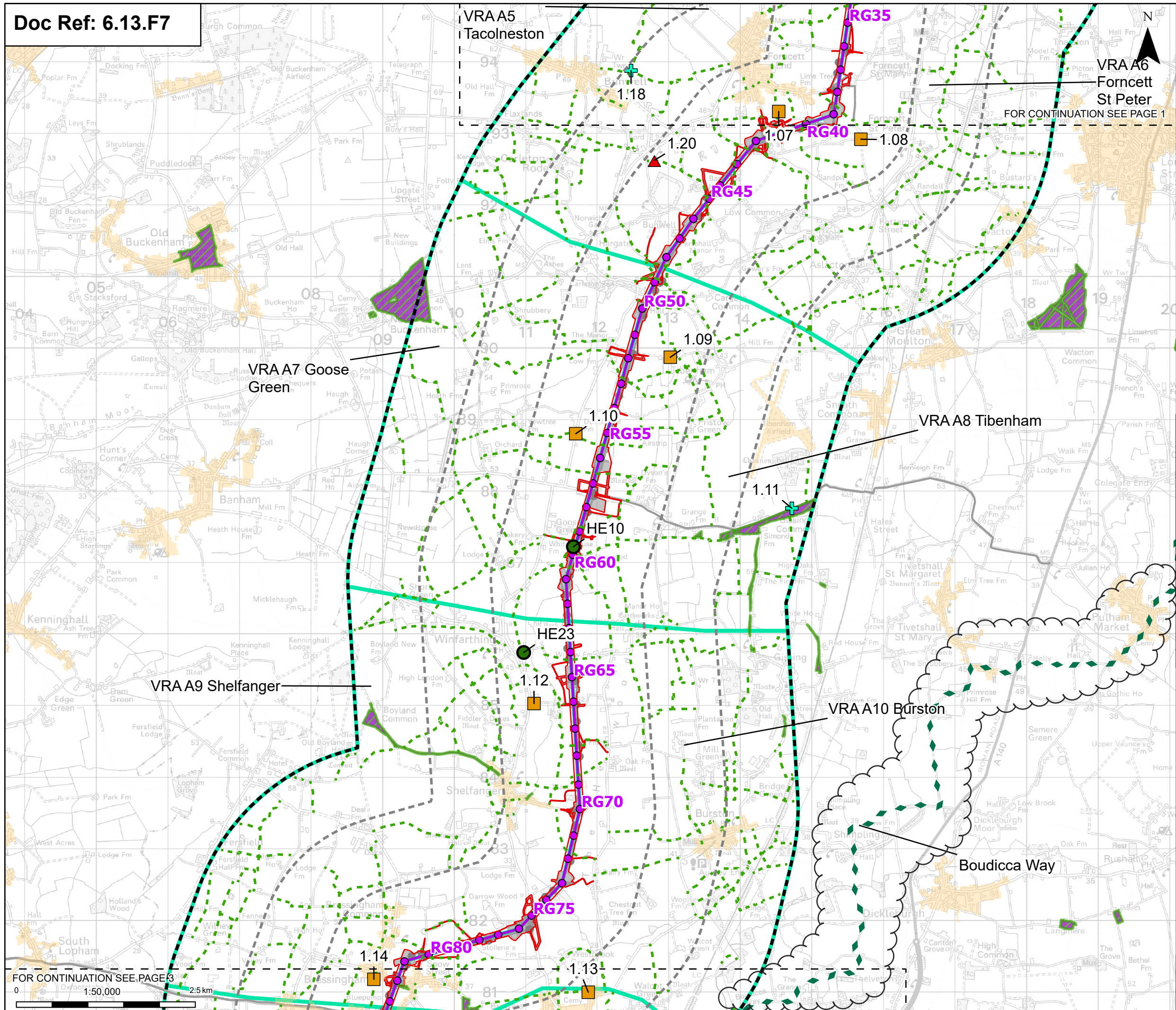
Title:
 Figure 13.7 - Landscape and Visual - Visual Receptors and Viewpoints
 Page 1 of 13

Designed	L. Cargill	Date	May 26
Drawn	S. Sarkar	Date	May 26
Checked	A. Fell	Date	May 26
Approved	K. Burrows	Date	May 26
Scale:	1:50,000	Datum:	AOD
Original Size:	A3	Grid:	OS
Suitability Code:	A2	Project Number:	10059280

Suitability Description:
 Accepted as Concept Stage

Drawing Number:
 10059280-ARC-ELS-ZZ-DR-ZZ-00300

Revision:
 C



Order limits
 Sheet index outline

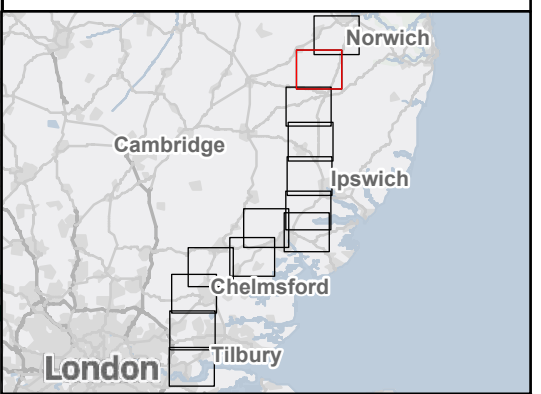
Proposed project design details
 Proposed standard lattice pylon location
 Proposed overhead line alignment
 Other temporary and permanent construction and operational works

Discipline specific constraints
 1 km buffer
 2 km buffer
 LVIA Study Area

Viewpoints
 ES landscape and visual viewpoint (baseline photo only)
 ES landscape and visual viewpoint (photomontage)
 ES landscape and visual viewpoint (wires only)

Additional historic environment viewpoints
 Public rights of way within 3 km Study Area
 Long distance path
 Visual Receptor Area
 Countryside and rights of way (CROW) conclusive registered common land
 Open access land
 Built up areas (Source: Office for National Statistics)

Note: The proposed overhead line alignment and proposed underground cable alignment together comprise the alignment. For further details regarding the design, please refer to Figures 4.1 (document reference 6.4.F1) and 4.2 (document reference 6.4.F2).



Rev	Date	Description	Drawn	Check	Approv
C	May 2026	FOR DCO APPLICATION	SS	AF	KB
B	Dec 2025	FOR DCO APPLICATION	KF	AF	KB
A	Aug 2025	FOR DCO APPLICATION	SS	AF	KB

PROJECT:
nationalgrid Norwich to Tilbury

Planning Inspectorate App Number: EN020027
 Regulation 5(2)(a)

Title:
Figure 13.7 - Landscape and Visual - Visual Receptors and Viewpoints
 Page 2 of 13

Designed	L. Cargill	Date	May 26
Drawn	S. Sarkar	Date	May 26
Checked	A. Fell	Date	May 26
Approved	K. Burrows	Date	May 26
Scale:	1:50,000	Datum:	AOD
Original Size:	A3	Grid:	OS
Suitability Code:	A2	Project Number:	10059280

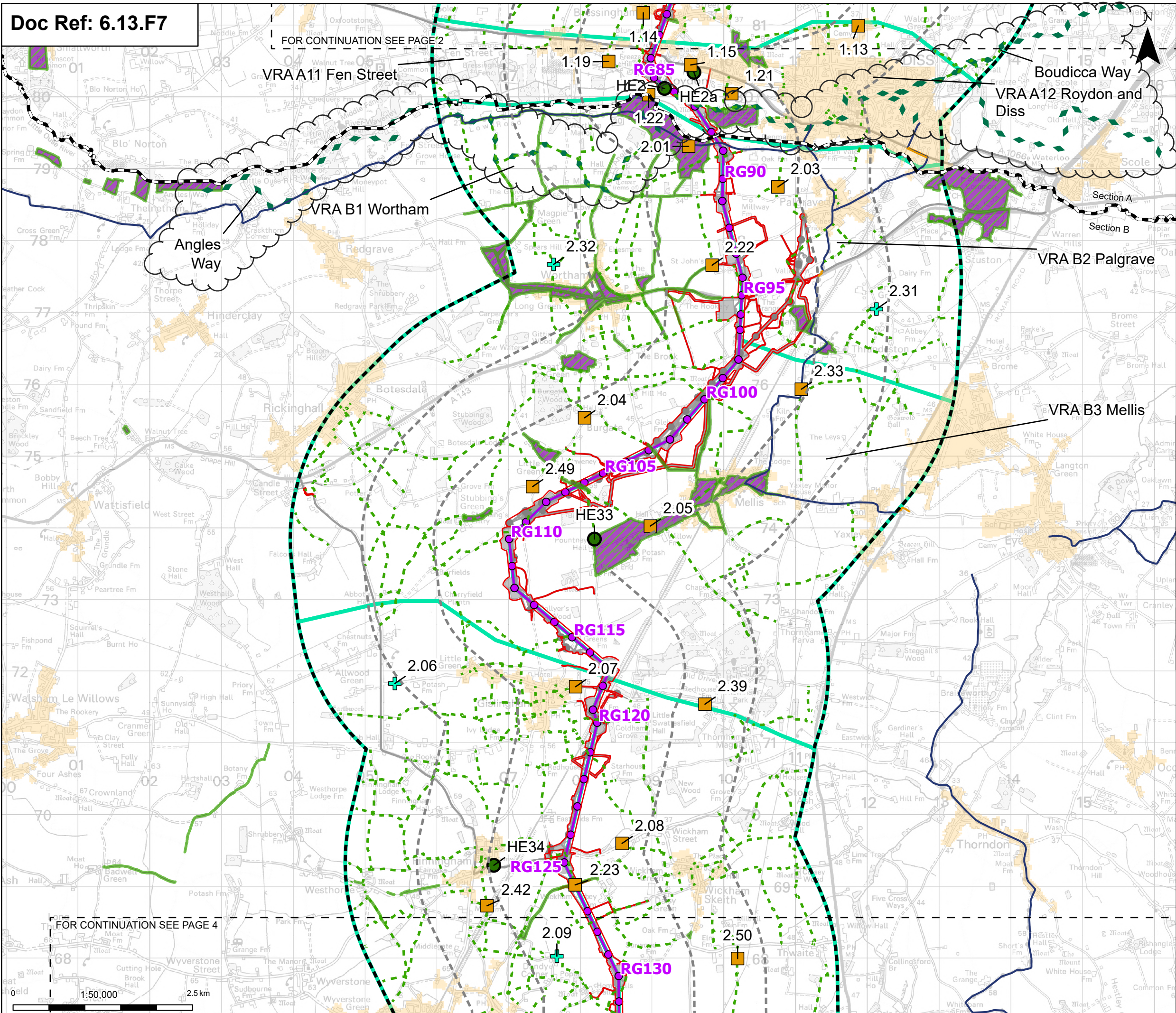
Accepted as Concept Stage

Drawing Number:
 10059280-ARC-ELS-ZZ-DR-ZZ-00300

Revision:
C

FOR CONTINUATION SEE PAGE 8
 0 1:50,000 2.5 km

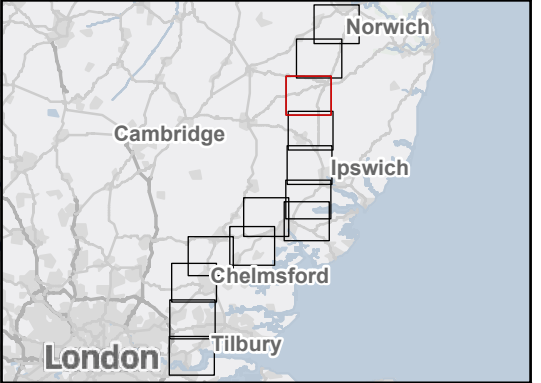
FOR CONTINUATION SEE PAGE 2



FOR CONTINUATION SEE PAGE 4

- Order limits
 - - - Sheet index outline
 - Project section line
 - - - Public rights of way within 3 km Study Area
 - Long distance path
 - National cycle networks
 - Traffic free national cycle networks
 - On road national cycle networks
 - Proposed standard lattice pylon location
 - Proposed overhead line alignment
 - Environmental mitigation
 - Other temporary and permanent construction and operational works
 - Visual Receptor Area
 - Countryside and rights of way (CRoW) conclusive registered common land
 - Open access land
 - Built up areas (Source: Office for National Statistics)
 - Note: The proposed overhead line alignment and proposed underground cable alignment together comprise the alignment. For further details regarding the design, please refer to Figures 4.1 (document reference 6.4.F1) and 4.2 (document reference 6.4.F2).
- Discipline specific constraints**
- 1 km buffer
 - 2 km buffer
 - LVIA Study Area
- Viewpoints**
- ES landscape and visual viewpoint (photomontage)
 - + ES landscape and visual viewpoint (wirelines only)
 - Additional historic environment viewpoints

Notes: © Crown copyright and database rights 2025 Ordnance Survey AC0000808122, Contains public sector information licensed under the Open Government Licence v3.0, © National Grid UK



Rev	Date	Description	Drawn	Check	Approv
C	May 2026	FOR DCO APPLICATION	SS	AF	KB
B	Dec 2025	FOR DCO APPLICATION	KF	AF	KB
A	Aug 2025	FOR DCO APPLICATION	SS	AF	KB

PROJECT:
nationalgrid Norwich to Tilbury

Planning Inspectorate App Number: EN020027
 Regulation 5(2)(a)

Title:
Figure 13.7 - Landscape and Visual - Visual Receptors and Viewpoints
 Page 3 of 13

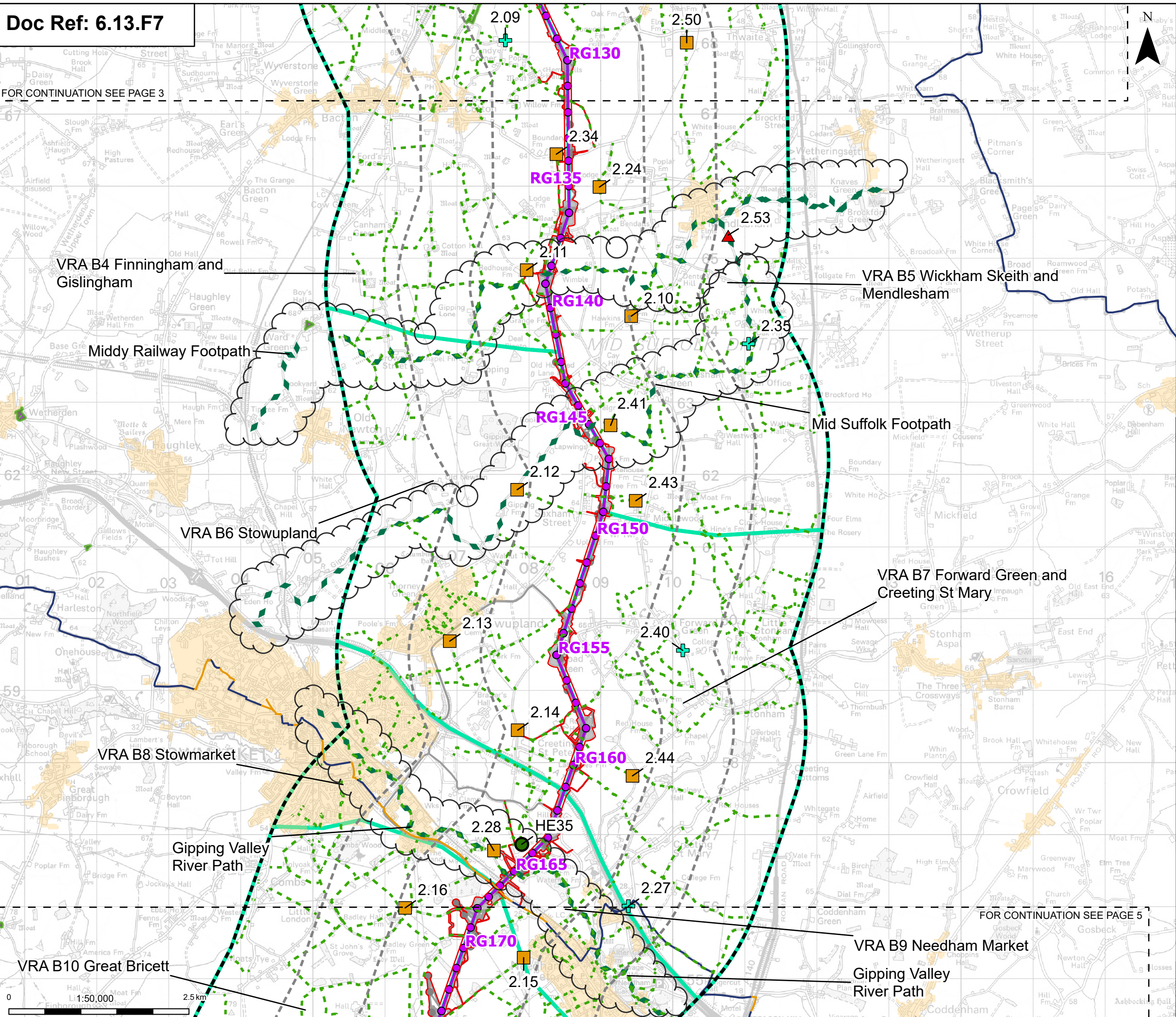
Designed	L. Cargill	Date	May 26
Drawn	S. Sarkar	Date	May 26
Checked	A. Fell	Date	May 26
Approved	K. Burrows	Date	May 26
Scale:	1:50,000	Datum:	AOD
Original Size:	A3	Grid:	OS
Suitability Code:	A2	Project Number:	10059280

Accepted as Concept Stage

Drawing Number:
 10059280-ARC-ELS-ZZ-DR-ZZ-00300

Revision:
C

FOR CONTINUATION SEE PAGE 3



Order limits
 Sheet index outline

Proposed project design details
 Proposed standard lattice pylon location
 Proposed overhead line alignment
 Environmental mitigation
 Other temporary and permanent construction and operational works

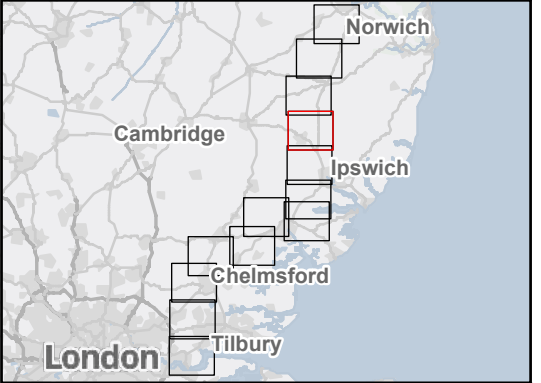
Discipline specific constraints
 1 km buffer
 2 km buffer
 LVIA Study Area

Viewpoints
 ES landscape and visual viewpoint (baseline photo only)
 ES landscape and visual viewpoint (photomontage)
 ES landscape and visual viewpoint (wireslines only)
 Additional historic environment viewpoints

Public rights of way within 3 km Study Area
 Long distance path
 National cycle networks
 Traffic free national cycle networks
 On road national cycle networks
 Visual Receptor Area
 Countryside and rights of way (CROW) conclusive registered common land
 Open access land
 Built up areas (Source: Office for National Statistics)

Note: The proposed overhead line alignment and proposed underground cable alignment together comprise the alignment. For further details regarding the design, please refer to Figures 4.1 (document reference 6.4.F1) and 4.2 (document reference 6.4.F2).

Notes: © Crown copyright and database rights 2025 Ordnance Survey AC000086122, Contains public sector information licensed under the Open Government Licence v3.0, © National Grid UK



Rev	Date	Description	Drawn	Check	Approv
C	May 2026	FOR DCO APPLICATION	SS	AF	KB
B	Dec 2025	FOR DCO APPLICATION	KF	AF	KB
A	Aug 2025	FOR DCO APPLICATION	SS	AF	KB

PROJECT:
nationalgrid Norwich to Tilbury

Planning Inspectorate App Number: EN020027
 Regulation 5(2)(a)

Title:
Figure 13.7 - Landscape and Visual - Visual Receptors and Viewpoints
 Page 4 of 13

Designed	L. Cargill	Date	May 26
Drawn	S. Sarkar	Date	May 26
Checked	A. Fell	Date	May 26
Approved	K. Burrows	Date	May 26
Scale:	1:50,000	Datum:	AOD
Original Size:	A3	Grid:	OS
Suitability Code:	A2	Project Number:	10059280

Suitability Description:
 Accepted as Concept Stage

Drawing Number:
 10059280-ARC-ELS-ZZ-DR-ZZ-00300

Revision:
 C

FOR CONTINUATION SEE PAGE 5

VRA B10 Great Bricett

VRA B9 Needham Market

Gipping Valley River Path

FOR CONTINUATION SEE PAGE 4

VRA B11 Barking and Willisham

Gipping Valley River Path

VRA B13 Somersham

VRA B12 Elmsett

Bramford Substation

VRA C3 Ipswich West, Bramford and Sproughton

VRA C1 Burstall

Proposed substation extension

Gipping Valley River Path

FOR CONTINUATION SEE PAGE 6

VRA C4 Chattisham

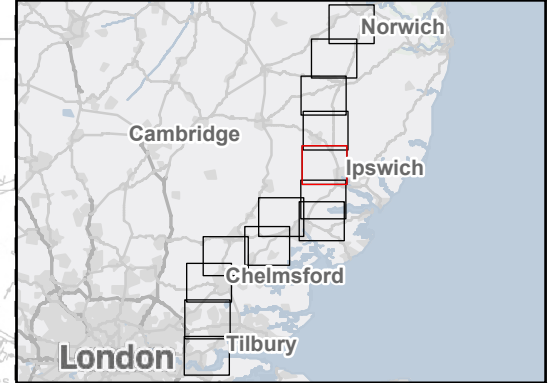
VRA C2 Washbrook

Hadleigh Railway Walk



- Order limits
 - Sheet index cutline
 - Project section line
 - Proposed project design details
 - Proposed full line tension gantry
 - Proposed low duty gantry
 - Proposed standard lattice pylon location
 - Proposed overhead line alignment
 - Bramford Substation
 - Bramford Substation Extension
 - Environmental mitigation
 - Other temporary and permanent construction and operational works
 - Discipline specific constraints
 - 1 km buffer
 - 2 km buffer
 - LVIA Study Area
 - National landscape
 - Viewpoints
 - ES landscape and visual viewpoint (baseline photo only)
 - ES landscape and visual viewpoint (photomontage)
 - ES landscape and visual viewpoint (wirelines only)
 - Additional historic environment viewpoints
 - Public rights of way within 3 km Study Area
 - Long distance path
 - National cycle networks
 - Traffic free national cycle networks
 - On road national cycle networks
 - Visual Receptor Area
 - Countryside and rights of way (CRoW) conclusive registered common land
 - Open access land
 - Built up areas (Source: Office for National Statistics)
- Note: The proposed overhead line alignment and proposed underground cable alignment together comprise the alignment. For further details regarding the design, please refer to Figures 4.1 (document reference 6.4.F1) and 4.2 (document reference 6.4.F2).

Notes: © Crown copyright and database rights 2025 Ordnance Survey AC0000808122. Contains public sector information licensed under the Open Government Licence v3.0, © National Grid UK



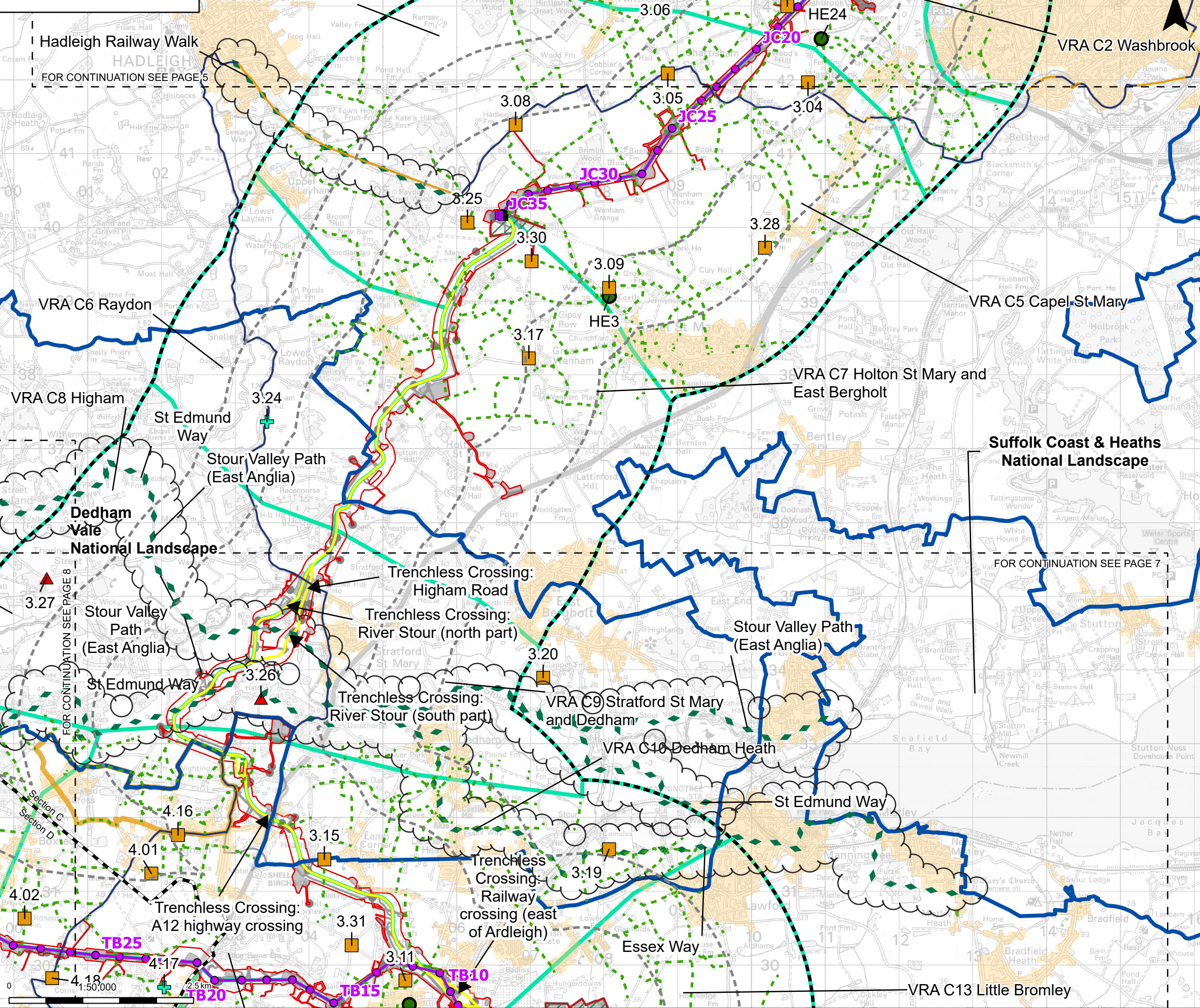
Rev	Date	Description	Drawn	Check	Approv
C	May 2026	FOR DCO APPLICATION	SS	AF	KB
B	Dec 2025	FOR DCO APPLICATION	KF	AF	KB
A	Aug 2025	FOR DCO APPLICATION	SS	AF	KB

PROJECT: **nationalgrid** Norwich to Tilbury
 Planning Inspectorate App Number: EN020027 Regulation 5(2)(a)

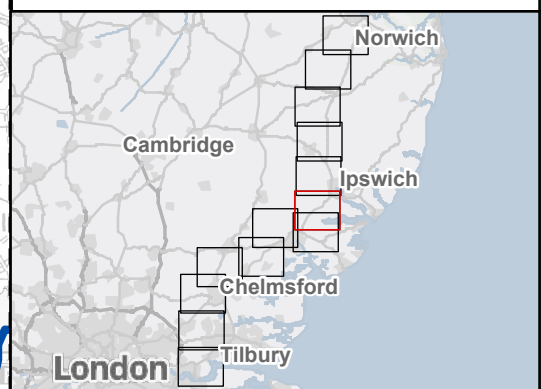
Title:
Figure 13.7 - Landscape and Visual - Visual Receptors and Viewpoints
 Page 5 of 13

Designed	L. Cargill	Date	May 26
Drawn	S. Sarkar	Date	May 26
Checked	A. Fell	Date	May 26
Approved	K. Burrows	Date	May 26
Scale:	1:50,000	Datum:	AOD
Original Size:	A3	Grid:	OS
Suitability Code:	A2	Project Number:	10059280

Suitability Description:
 Accepted as Concept Stage
 Drawing Number: 10059280-ARC-ELS-ZZ-DR-ZZ-00300
 Revision: C



- Order limits
 - Sheet index cutline
 - Project section line
 - Proposed project design details
 - Proposed full line tension gantry
 - Proposed standard lattice pylon location
 - Proposed overhead line alignment
 - Proposed underground cable alignment
 - Proposed cable sealing end compound (CSEC)
 - Environmental area
 - Environmental mitigation
 - Other temporary and permanent construction and operational works
 - Discipline specific constraints
 - 1 km buffer
 - 2 km buffer
 - LVI Study Area
 - National landscape
 - Stour Valley Project Area
 - Viewpoints
 - ES landscape and visual viewpoint (baseline photo only)
 - ES landscape and visual viewpoint (photomontage)
 - ES landscape and visual viewpoint (wirelines only)
 - Additional historic environment viewpoints
 - Public rights of way within 3 km Study Area
 - Long distance path
 - National cycle networks
 - Traffic free national cycle networks
 - On road national cycle networks
 - Visual Receptor Area
 - Countryside and rights of way (CRoW) conclusive registered common land
 - Open access land
 - Built up areas (Source: Office for National Statistics)
- Note: The proposed overhead line alignment and proposed underground cable alignment together comprise the alignment. For further details regarding the design, please refer to Figures 4.1 (document reference 6.4.F1) and 4.2 (document reference 6.4.F2).



Rev	Date	Description	Drawn	Check	Approv
C	May 2026	FOR DCO APPLICATION	SS	AF	KB
B	Dec 2025	FOR DCO APPLICATION	KF	AF	KB
A	Aug 2025	FOR DCO APPLICATION	SS	AF	KB

PROJECT:
nationalgrid Norwich to Tilbury

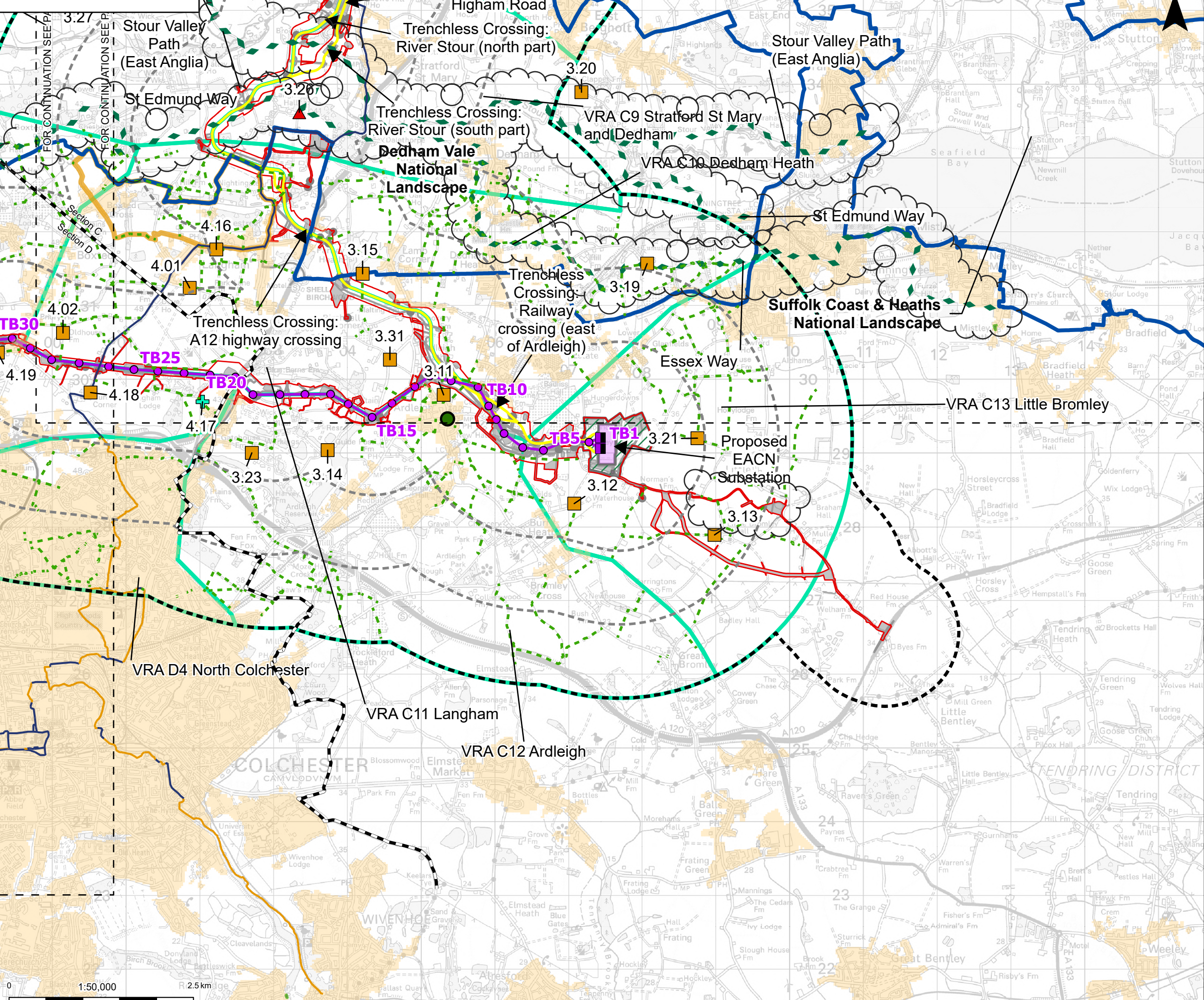
Planning Inspectorate App Number: EN020027
 Regulation 5(2)(a)

Title:
 Figure 13.7 - Landscape and Visual - Visual Receptors and Viewpoints
 Page 6 of 13

Designed	L. Cargill	Date	May 26
Drawn	S. Sarkar	Date	May 26
Checked	A. Fell	Date	May 26
Approved	K. Burrows	Date	May 26
Scale:	1:50,000	Datum:	AOD
Original Size:	A3	Grid:	OS
Suitability Code:	A2	Project Number:	10059280

Accepted as Concept Stage

Drawing Number: 10059280-ARC-ELS-ZZ-DR-ZZ-00300
 Revision: C



Order limits
 Sheet index outline
 Project section line

Proposed project design details
 Proposed full line tension gantry
 Proposed standard lattice pylon location
 Proposed overhead line alignment
 Proposed underground cable alignment
 Proposed DNO Substation
 Proposed East Anglia Connection Node (EACN) Substation
 Environmental area
 Other temporary and permanent construction and operational works

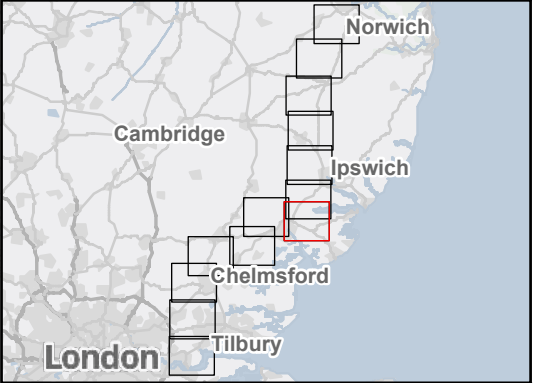
Discipline specific constraints
 1 km buffer
 2 km buffer
 LVIA Study Area
 National landscape
 Stour Valley Project Area

Viewpoints
 ES landscape and visual viewpoint (baseline photo only)

ES landscape and visual viewpoint (photomontage)
ES landscape and visual viewpoint (wireslines only)
 Additional historic environment viewpoints
 Public rights of way within 3 km Study Area
 Long distance path
 National cycle networks
 Traffic free national cycle networks
 On road national cycle networks
 Visual Receptor Area
 Countryside and rights of way (CROW) conclusive registered common land
 Open access land
 Built up areas (Source: Office for National Statistics)

Note: The proposed overhead line alignment and proposed underground cable alignment together comprise the alignment. For further details regarding the design, please refer to Figures 4.1 (document reference 6.4.F1) and 4.2 (document reference 6.4.F2).

Notes: © Crown copyright and database rights 2025 Ordnance Survey AC000088122, Contains public sector information licensed under the Open Government Licence v3.0, © National Grid UK



Rev	Date	Description	Drawn	Check	Approv
C	May 2026	FOR DCO APPLICATION	SS	AF	KB
B	Dec 2025	FOR DCO APPLICATION	KF	AF	KB
A	Aug 2025	FOR DCO APPLICATION	SS	AF	KB

PROJECT:
 nationalgrid Norwich to Tilbury

Planning Inspectorate App Number: EN020027
 Regulation 5(2)(a)

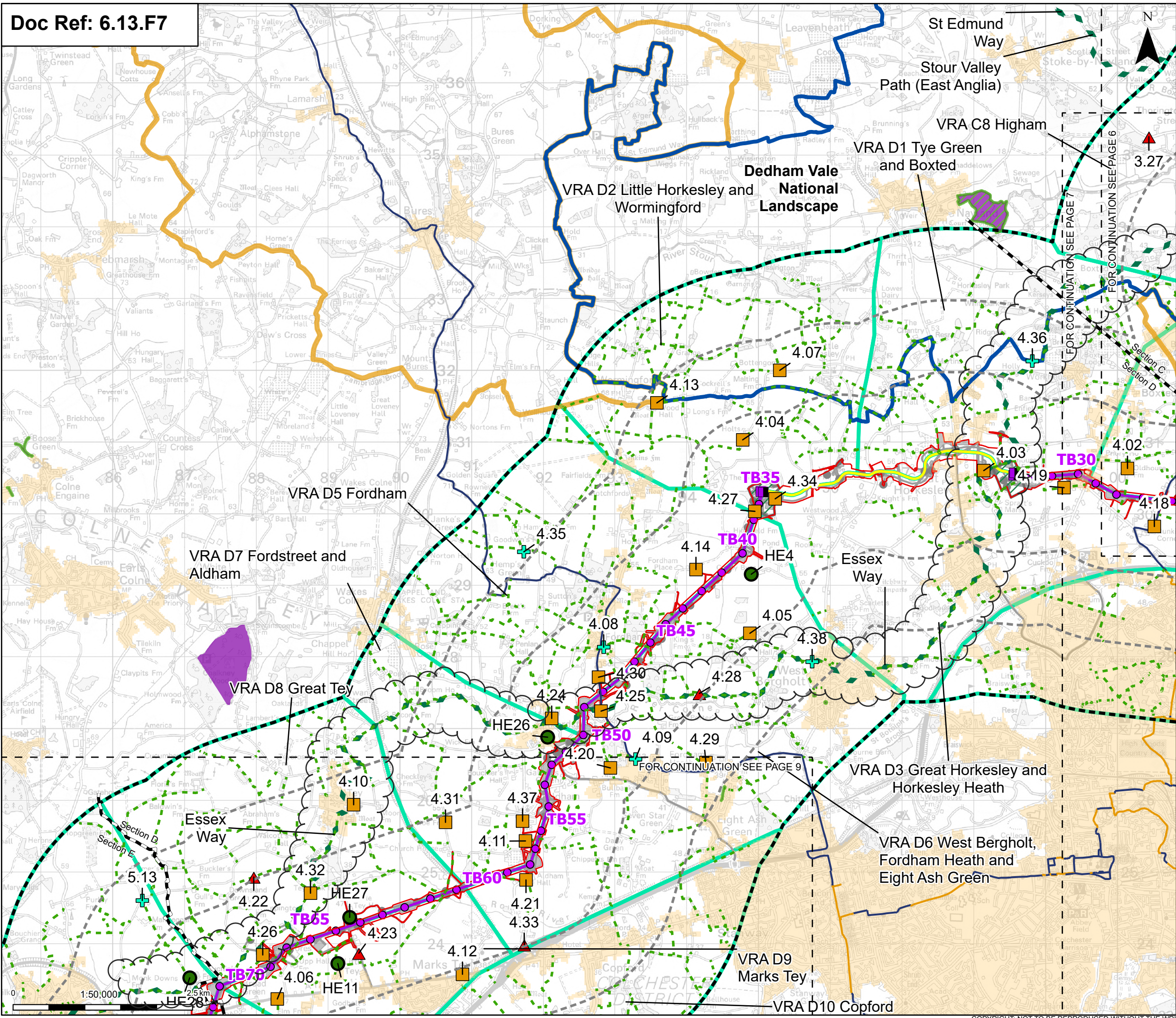
Title:
 Figure 13.7 - Landscape and Visual - Visual Receptors and Viewpoints
 Page 7 of 13

Designed	L. Cargill	Date	May 26
Drawn	S. Sarkar	Date	May 26
Checked	A. Fell	Date	May 26
Approved	K. Burrows	Date	May 26
Scale:	1:50,000	Datum:	AOD
Original Size:	A3	Grid:	OS
Suitability Code:	A2	Project Number:	10059280

Suitability Description:
 Accepted as Concept Stage

Drawing Number:
 10059280-ARC-ELS-ZZ-DR-ZZ-00300

Revision:
 C



Proposed project design details

- Proposed full line tension gantry
- Proposed standard lattice pylon location
- Proposed overhead line alignment
- Proposed underground cable alignment
- Proposed cable sealing end compound (CSEC)
- Environmental area
- Environmental mitigation
- Other temporary and permanent construction and operational works

Discipline specific constraints

- 1 km buffer
- 2 km buffer
- LVIA Study Area
- National landscape
- Stour Valley Project Area

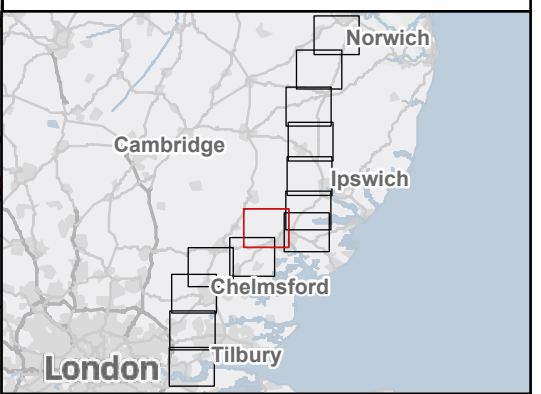
Viewpoints

- ES landscape and visual viewpoint (baseline photo only)
- ES landscape and visual viewpoint (photomontage)

ES landscape and visual viewpoint (wirelines only)

- Additional historic environment viewpoints
- Public rights of way within 3 km Study Area
- Long distance path
- National cycle networks
- Traffic free national cycle networks
- On road national cycle networks
- Visual Receptor Area
- Countryside and rights of way (CRoW) conclusive registered common land
- Open access land
- Built up areas (Source: Office for National Statistics)

Note: The proposed overhead line alignment and proposed underground cable alignment together comprise the alignment. For further details regarding the design, please refer to Figures 4.1 (document reference 6.4.F1) and 4.2 (document reference 6.4.F2).



Rev	Date	Description	Drawn	Check	Approv
C	May 2026	FOR DCO APPLICATION	SS	AF	KB
B	Dec 2025	FOR DCO APPLICATION	KF	AF	KB
A	Aug 2025	FOR DCO APPLICATION	SS	AF	KB

PROJECT:
nationalgrid Norwich to Tilbury

Planning Inspectorate App Number: EN020027
 Regulation 5(2)(a)

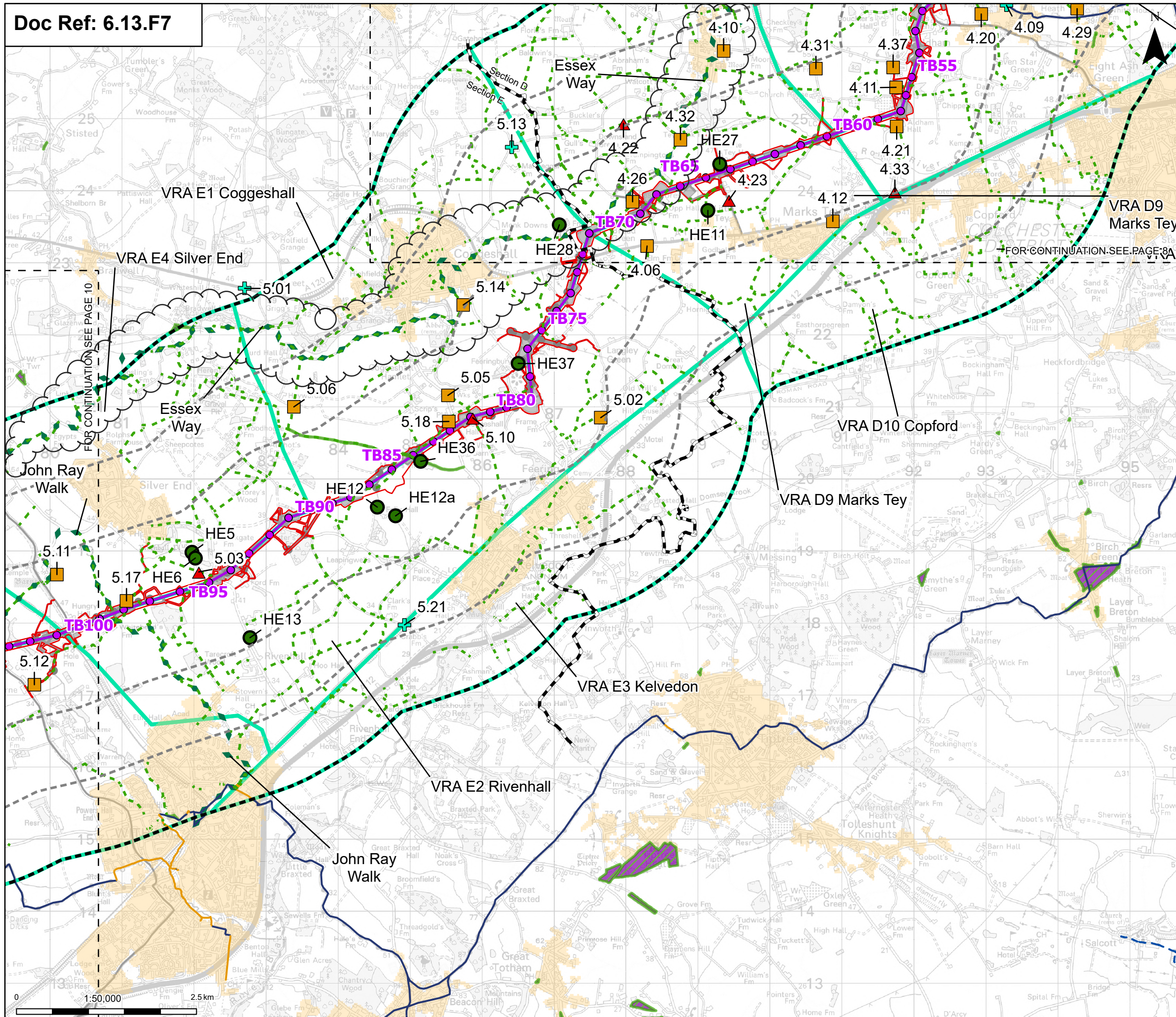
Title:
Figure 13.7 - Landscape and Visual - Visual Receptors and Viewpoints
 Page 8 of 13

Designed	L. Cargill	Date	May 26
Drawn	S. Sarkar	Date	May 26
Checked	A. Fell	Date	May 26
Approved	K. Burrows	Date	May 26
Scale:	1:50,000	Datum:	AOD
Original Size:	A3	Grid:	OS
Suitability Code:	A2	Project Number:	10059280

Suitability Description:
 Accepted as Concept Stage

Drawing Number:
 10059280-ARC-ELS-ZZ-DR-ZZ-00300

Revision:
 C



Order limits
 Sheet index outline
 Project section line

Proposed project design details
 Proposed standard lattice pylon location
 Proposed overhead line alignment
 Environmental mitigation
 Other temporary and permanent construction and operational works

Discipline specific constraints
 1 km buffer
 2 km buffer
 LVIA Study Area

Viewpoints
 ES landscape and visual viewpoint (baseline photo only)
 ES landscape and visual viewpoint (photomontage)
 ES landscape and visual viewpoint (wirelines only)
 Additional historic environment viewpoints

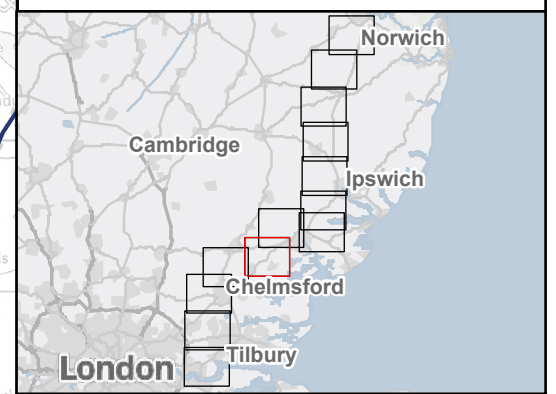
Public rights of way within 3 km Study Area
 King Charles III england coast path
 Long distance path

National cycle networks
 Traffic free national cycle networks
 On road national cycle networks

Visual Receptor Area
 Countryside and rights of way (CROW) conclusive registered common land
 Open access land

Other symbols:
 Built up areas (Source: Office for National Statistics)
 Note: The proposed overhead line alignment and proposed underground cable alignment together comprise the alignment. For further details regarding the design, please refer to Figures 4.1 (document reference 6.4.F1) and 4.2 (document reference 6.4.F2).

Notes: © Crown copyright and database rights 2025 Ordnance Survey AC000088122, Contains public sector information licensed under the Open Government Licence v3.0, © National Grid UK



Rev	Date	Description	Drawn	Check	Approv
C	May 2026	FOR DCO APPLICATION	SS	AF	KB
B	Dec 2025	FOR DCO APPLICATION	KF	AF	KB
A	Aug 2025	FOR DCO APPLICATION	SS	AF	KB

PROJECT:
nationalgrid Norwich to Tilbury

Planning Inspectorate App Number: EN020027
 Regulation 5(2)(a)

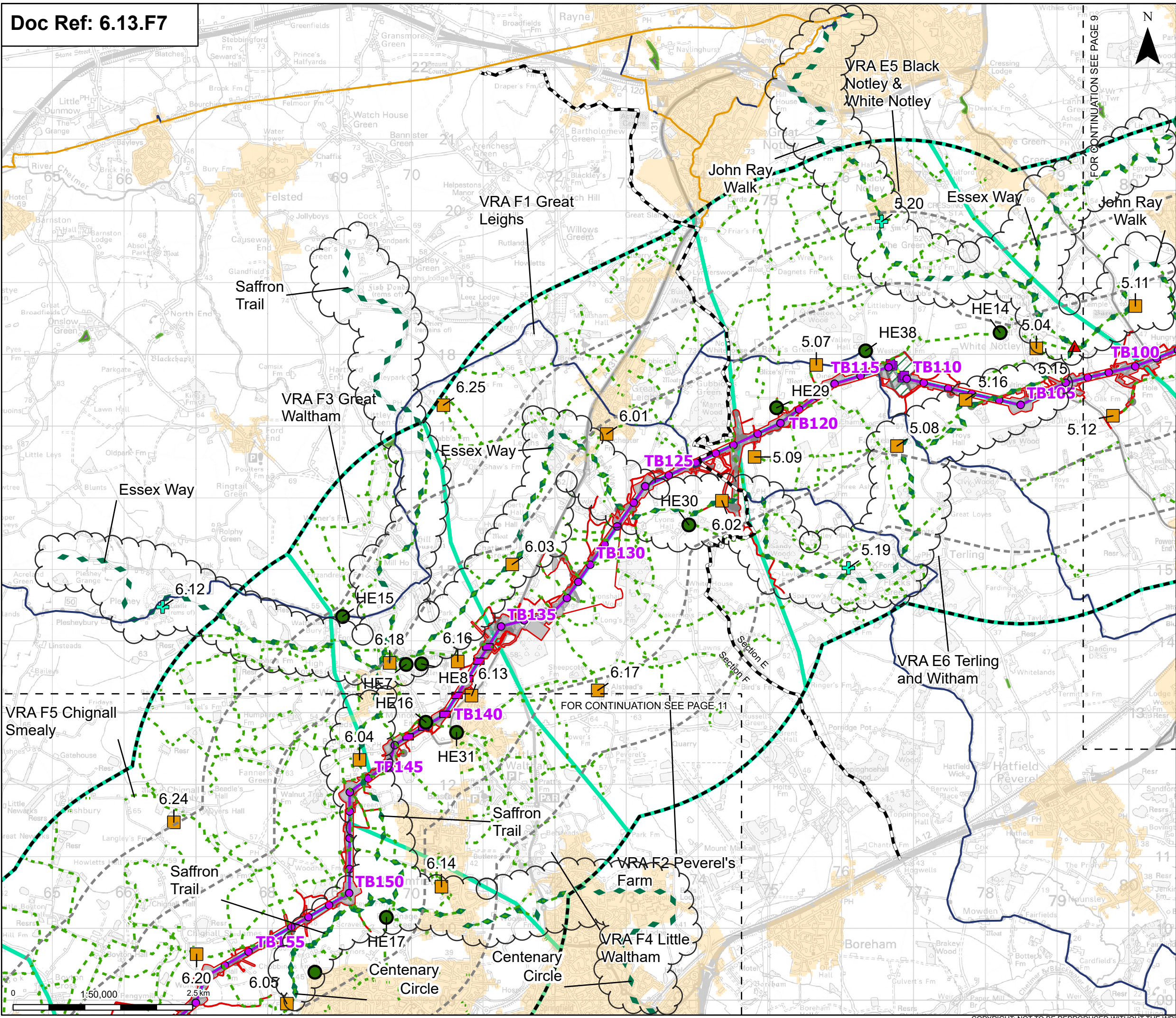
Title:
Figure 13.7 - Landscape and Visual - Visual Receptors and Viewpoints
 Page 9 of 13

Designed	L. Cargill	Date	May 26
Drawn	S. Sarkar	Date	May 26
Checked	A. Fell	Date	May 26
Approved	K. Burrows	Date	May 26
Scale:	1:50,000	Datum:	AOD
Original Size:	A3	Grid:	OS
Suitability Code:	A2	Project Number:	10059280

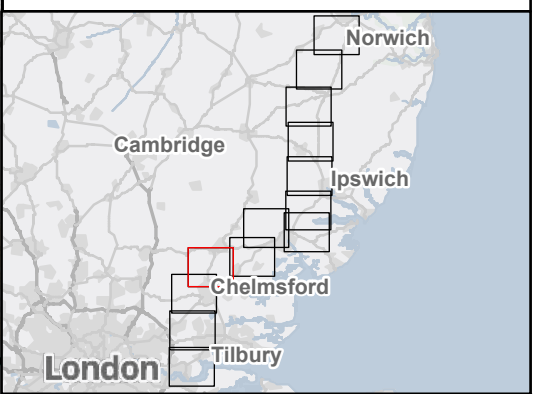
Suitability Description:
 Accepted as Concept Stage

Drawing Number:
 10059280-ARC-ELS-ZZ-DR-ZZ-00300

Revision:
C



- Order limits
 - - - Sheet index cutline
 - Project section line
 - Proposed low duty gantry
 - Proposed low height pylon location
 - Proposed standard lattice pylon location
 - Proposed overhead line alignment
 - Proposed underground cable alignment
 - Proposed cable sealing end compound (CSEC)
 - Environmental area
 - Environmental mitigation
 - Other temporary and permanent construction and operational works
 - - - 1 km buffer
 - - - 2 km buffer
 - - - LVIA Study Area
 - ▲ ES landscape and visual viewpoint (baseline photo only)
 - ES landscape and visual viewpoint (photomontage)
 - + ES landscape and visual viewpoint (wirelines only)
 - Additional historic environment viewpoints
 - - - Public rights of way within 3 km Study Area
 - Long distance path
 - National cycle networks
 - Traffic free national cycle networks
 - On road national cycle networks
 - Visual Receptor Area
 - Countryside and rights of way (CRoW) conclusive registered common land
 - Open access land
 - Built up areas (Source: Office for National Statistics)
- Discipline specific constraints**
- - - 1 km buffer
 - - - 2 km buffer
 - - - LVIA Study Area
- Viewpoints**
- ▲ ES landscape and visual viewpoint (baseline photo only)
 - ES landscape and visual viewpoint (photomontage)
- Note: The proposed overhead line alignment and proposed underground cable alignment together comprise the alignment. For further details regarding the design, please refer to Figures 4.1 (document reference 6.4.F1) and 4.2 (document reference 6.4.F2).



Rev	Date	Description	Drawn	Check	Approv
C	May 2026	FOR DCO APPLICATION	SS	AF	KB
B	Dec 2025	FOR DCO APPLICATION	KF	AF	KB
A	Aug 2025	FOR DCO APPLICATION	SS	AF	KB

PROJECT:
nationalgrid Norwich to Tilbury

Planning Inspectorate App Number: EN020027
 Regulation 5(2)(a)

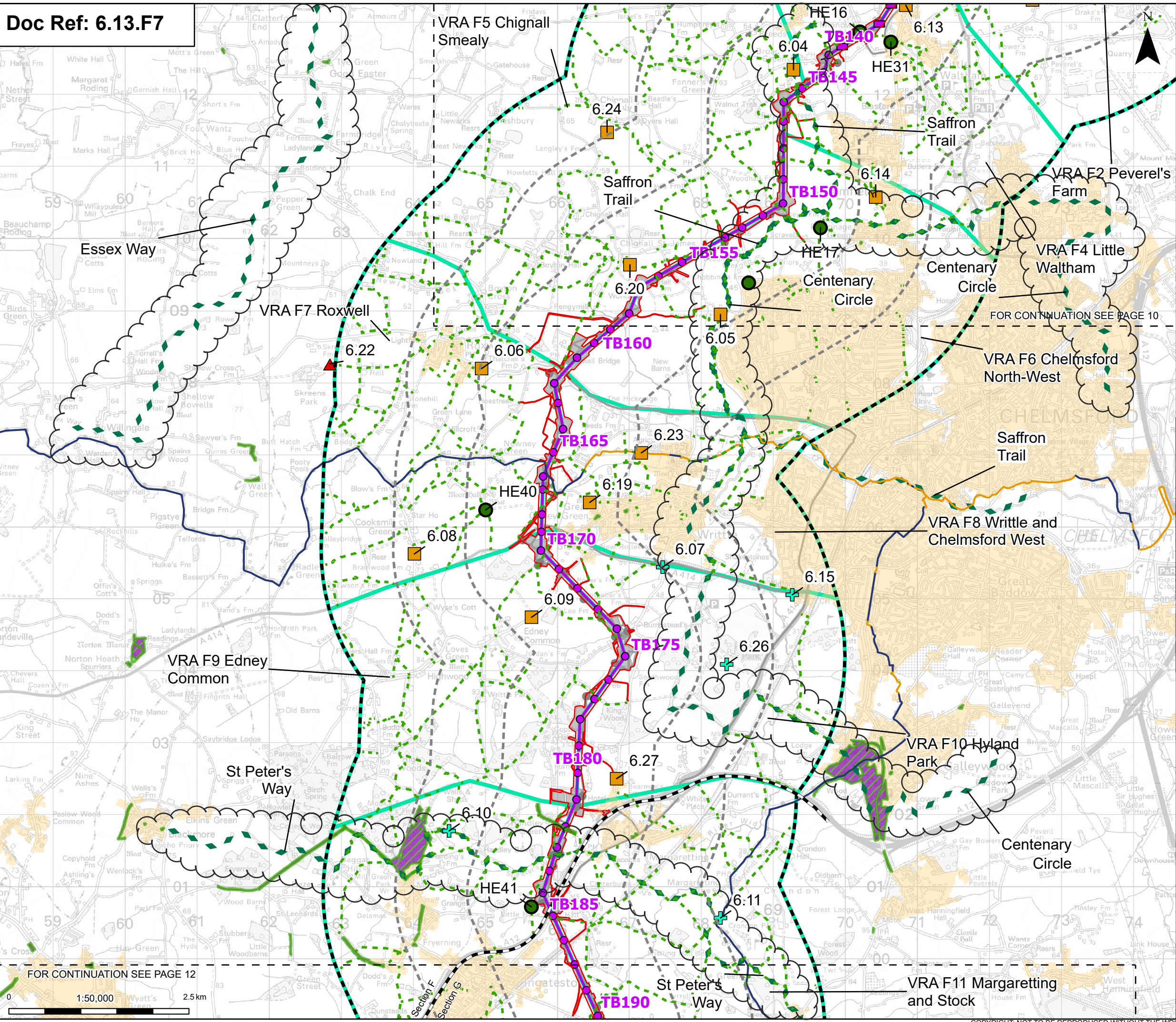
Title:
Figure 13.7 - Landscape and Visual - Visual Receptors and Viewpoints
 Page 10 of 13

Designed	L. Cargill	Date	May 26
Drawn	S. Sarkar	Date	May 26
Checked	A. Fell	Date	May 26
Approved	K. Burrows	Date	May 26
Scale:	1:50,000	Datum:	AOD
Original Size:	A3	Grid:	OS
Suitability Code:	A2	Project Number:	10059280

Suitability Description:
 Accepted as Concept Stage

Drawing Number:
 10059280-ARC-ELS-ZZ-DR-ZZ-00300

Revision:
 C



Order limits
 Sheet index outline
 Project section line

Proposed project design details
 Proposed low height pylon location
 Proposed standard lattice pylon location
 Proposed overhead line alignment
 Environmental mitigation
 Other temporary and permanent construction and operational works

Discipline specific constraints
 1 km buffer
 2 km buffer
 LVIA Study Area

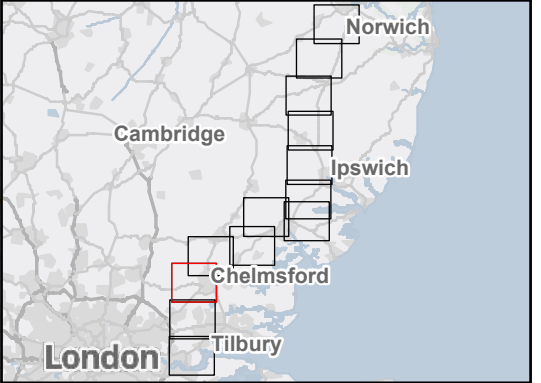
Viewpoints
 ES landscape and visual viewpoint (baseline photo only)
 ES landscape and visual viewpoint (photomontage)
 ES landscape and visual viewpoint (wirelines only)

Additional historic environment viewpoints
 Public rights of way within 3 km Study Area
 Long distance path

National cycle networks
 Traffic free national cycle networks
 On road national cycle networks
 Visual Receptor Area
 Countryside and rights of way (CROW) conclusive registered common land
 Open access land

Notes: The proposed overhead line alignment and proposed underground cable alignment together comprise the alignment. For further details regarding the design, please refer to Figures 4.1 (document reference 6.4.F1) and 4.2 (document reference 6.4.F2).

Notes: © Crown copyright and database rights 2025 Ordnance Survey AC000080122, Contains public sector information licensed under the Open Government Licence v3.0, © National Grid UK



Rev	Date	Description	Drawn	Check	Approv
C	May 2026	FOR DCO APPLICATION	SS	AF	KB
B	Dec 2025	FOR DCO APPLICATION	KF	AF	KB
A	Aug 2025	FOR DCO APPLICATION	SS	AF	KB

PROJECT:
 nationalgrid Norwich to Tilbury

Planning Inspectorate App Number: EN020027
 Regulation 5(2)(a)

Title:
 Figure 13.7 - Landscape and Visual - Visual Receptors and Viewpoints
 Page 11 of 13

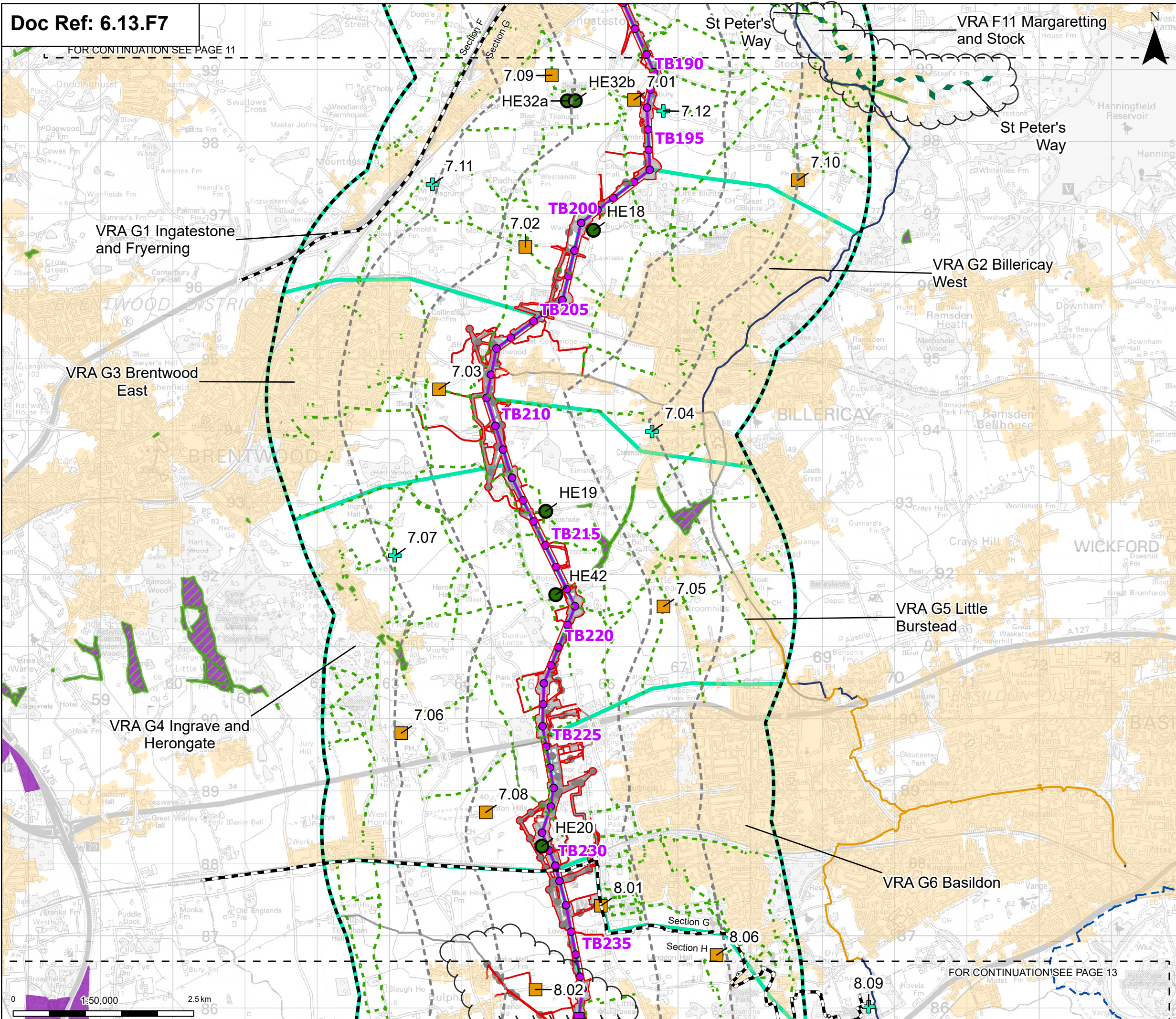
Designed	L. Cargill	Date	May 26
Drawn	S. Sarkar	Date	May 26
Checked	A. Fell	Date	May 26
Approved	K. Burrows	Date	May 26
Scale:	1:50,000	Datum:	AOD
Original Size:	A3	Grid:	OS
Suitability Code:	A2	Project Number:	10059280

Suitability Description:
 Accepted as Concept Stage

Drawing Number:
 10059280-ARC-ELS-ZZ-DR-ZZ-00300

Revision:
 C

FOR CONTINUATION SEE PAGE 11



Proposed project design details

- Proposed low height pylon location
- Proposed standard lattice pylon location
- Proposed overhead line alignment
- Environmental mitigation
- Other temporary and permanent construction and operational works

Discipline specific constraints

- 1 km buffer
- 2 km buffer
- LVIA Study Area

Viewpoints

- ES landscape and visual viewpoint (photomontage)
- ES landscape and visual viewpoint (wires only)
- Additional historic environment viewpoints

National cycle networks

- Traffic free national cycle networks
- On road national cycle networks

Visual Receptor Area

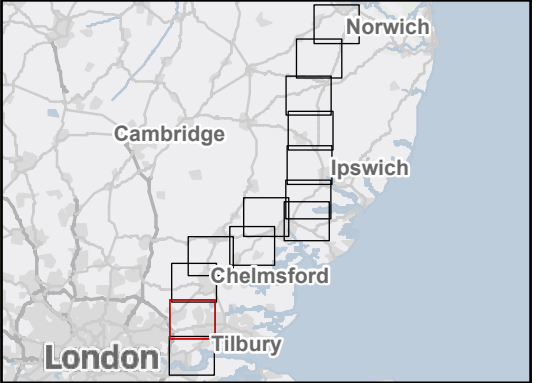
- Countryside and rights of way (CROW) conclusive registered common land
- Open access land

Public rights of way within 3 km Study Area

- King Charles III england coast path
- Long distance path

Notes: The proposed overhead line alignment and proposed underground cable alignment together comprise the alignment. For further details regarding the design, please refer to Figures 4.1 (document reference 6.4.F1) and 4.2 (document reference 6.4.F2).

Notes: © Crown copyright and database rights 2025 Ordnance Survey AC0000808122, Contains public sector information licensed under the Open Government Licence v3.0, © National Grid UK



Rev	Date	Description	Drawn	Check	Approv
C	May 2026	FOR DCO APPLICATION	SS	AF	KB
B	Dec 2025	FOR DCO APPLICATION	KF	AF	KB
A	Aug 2025	FOR DCO APPLICATION	SS	AF	KB

PROJECT: **Norwich to Tilbury**

nationalgrid

Planning Inspectorate App Number: EN020027
Regulation 5(2)(a)

Title:
Figure 13.7 - Landscape and Visual - Visual Receptors and Viewpoints
Page 12 of 13

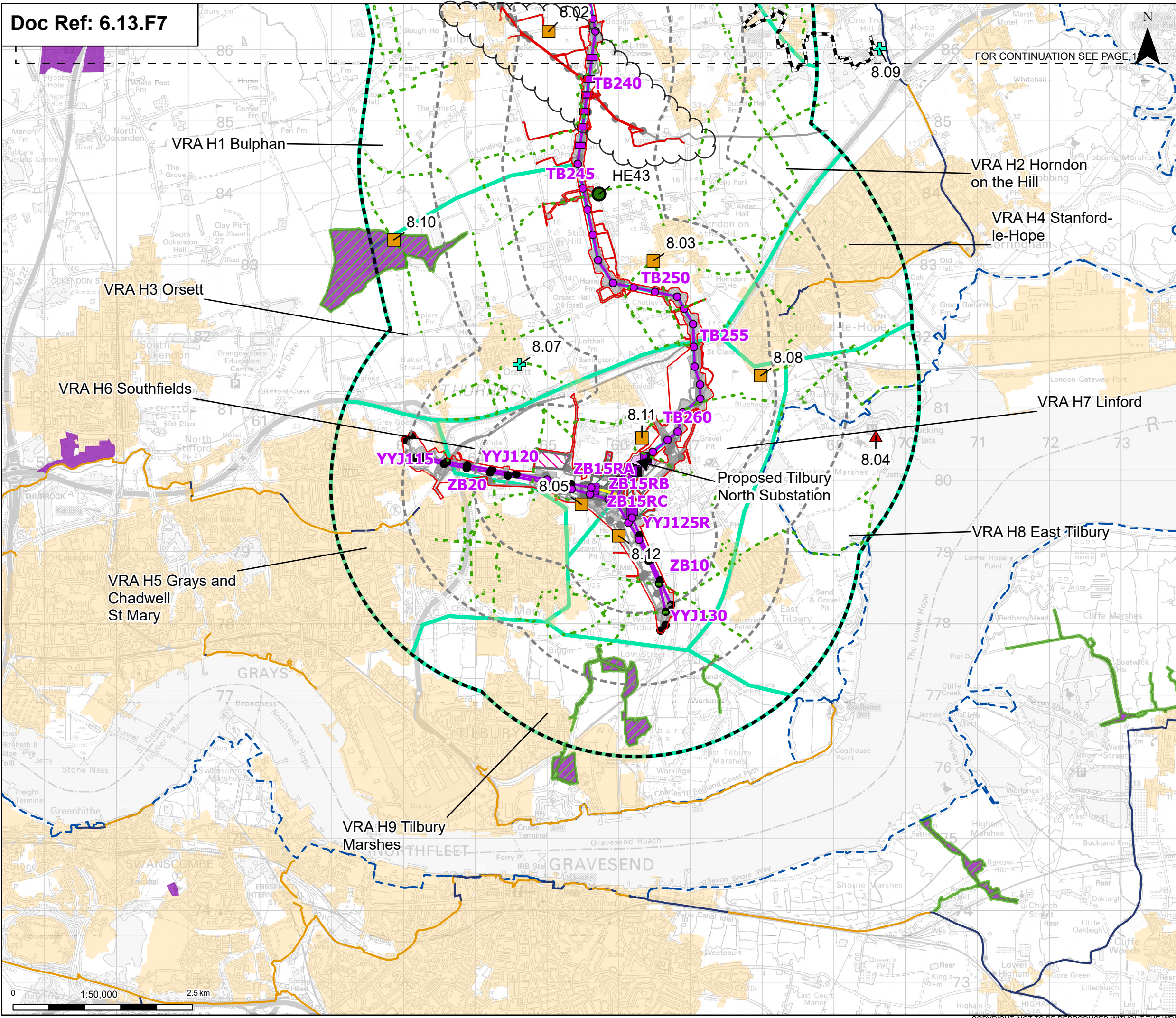
Designed	L. Cargill	Date	May 26
Drawn	S. Sarkar	Date	May 26
Checked	A. Fell	Date	May 26
Approved	K. Burrows	Date	May 26
Scale:	1:50,000	Datum:	AOD
Original Size:	A3	Grid:	OS
Suitability Code:	A2	Project Number:	10059280

Suitability Description:
Accepted as Concept Stage

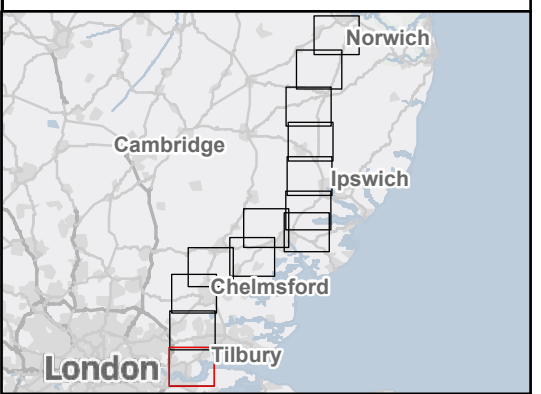
Drawing Number:
10059280-ARC-ELS-ZZ-DR-ZZ-00300

Revision:
C

FOR CONTINUATION SEE PAGE 1



- Order limits
 - Sheet index outline
 - Project section line
 - Proposed full line tension gantry
 - Proposed low duty gantry
 - Proposed low height pylon location
 - Existing pylon (modify)
 - Proposed standard lattice pylon location
 - Proposed overhead line alignment
 - Proposed underground cable alignment
 - Proposed Tilbury North Substation
 - Proposed cable sealing end compound (CSEC)
 - Environmental area
 - Environmental mitigation
 - Other temporary and permanent construction and operational works
 - Discipline specific constraints
 - 1 km buffer
 - 2 km buffer
 - LVIA Study Area
 - Viewpoints
 - ES landscape and visual viewpoint (baseline photo only)
 - ES landscape and visual viewpoint (photomontage)
 - ES landscape and visual viewpoint (wires only)
 - Additional historic environment viewpoints
 - Public rights of way within 3 km Study Area
 - King Charles III england coast path
 - National cycle networks
 - Traffic free national cycle networks
 - On road national cycle networks
 - Visual Receptor Area
 - Countryside and rights of way (CRoW) conclusive registered common land
 - Open access land
 - Built up areas (Source: Office for National Statistics)
- Note: The proposed overhead line alignment and proposed underground cable alignment together comprise the alignment. For further details regarding the design, please refer to Figures 4.1 (document reference 6.4.F1) and 4.2 (document reference 6.4.F2).



Rev	Date	Description	Drawn	Check	Approv
C	May 2026	FOR DCO APPLICATION	SS	AF	KB
B	Dec 2025	FOR DCO APPLICATION	KF	AF	KB
A	Aug 2025	FOR DCO APPLICATION	SS	AF	KB

PROJECT:
nationalgrid Norwich to Tilbury

Planning Inspectorate App Number: EN020027
 Regulation 5(2)(a)

Title:
Figure 13.7 - Landscape and Visual - Visual Receptors and Viewpoints
 Page 13 of 13

Designed	L. Cargill	Date	May 26
Drawn	S. Sarkar	Date	May 26
Checked	A. Fell	Date	May 26
Approved	K. Burrows	Date	May 26
Scale:	1:50,000	Datum:	AOD
Original Size:	A3	Grid:	OS
Suitability Code:	A2	Project Number:	10059280

Suitability Description:
 Accepted as Concept Stage

Drawing Number:
 10059280-ARC-ELS-ZZ-DR-ZZ-00300

Revision:
C